

Cast Iron Roll Specifications

GRADE: SGXTRA

Union Electric Åkers
Forged and Cast Rolls



DESCRIPTION

SGXTRA exhibits properties associated with both traditional acicular and pearlitic qualities. Typically, the graphite spheroids are surrounded by a layer of ferrite giving a characteristic 'bull's eye' effect.

The material, whilst having mechanical properties usually found in acicular grades, exhibits enhanced resistance to fire cracking and thermal failure. This is produced by careful control of alloying elements, particularly carbon, silicon and molybdenum as well as by comprehensive heat treatment.

The high strength and thermal resistance of SGEXTRA make it an ideal roll material for use in roughing applications where thermal duty is severe.

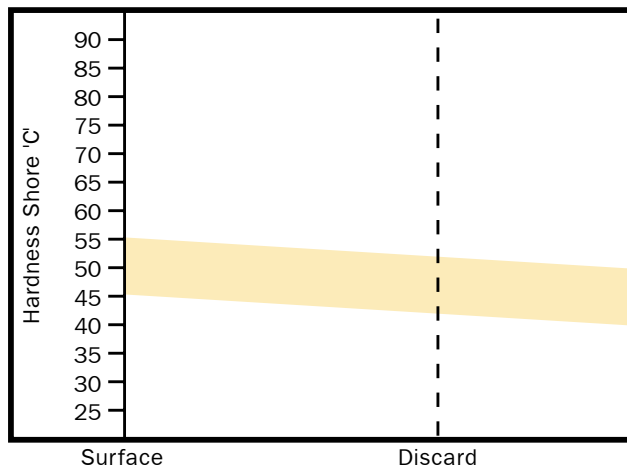
APPLICATIONS

Product	Type of Mill	Position
Medium Section		All Stands
Heavy Section		All Stands
Wide Strip	Roughing	Vertical Edgers

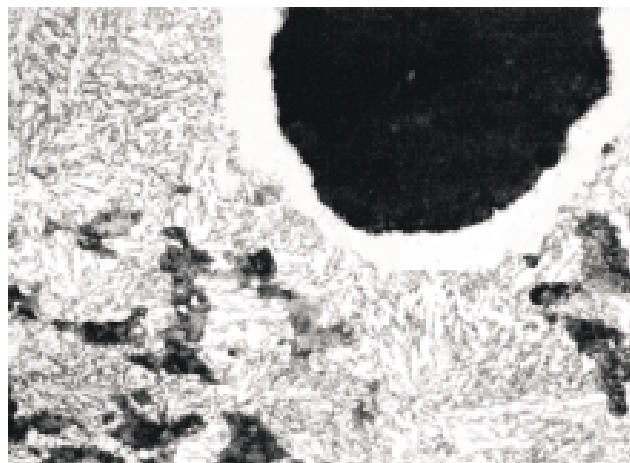
TYPICAL MECH. PROPERTIES

Property	N/mm ²
Tensile Strength	425
Bending Strength	850

DEPTH OF HARDNESS



MICROSTRUCTURE X500



AIM CHEMISTRY (WT%)

Code	Leeb E	Shore C	C	Si	Mn	Ni	Cr	Mo
SGXTRA	540/620	42/55	3.0/3.5	1.3/2.5	0.5/1.0	1.5/3.2	0.4 max	0.4/1.0